

LAXWORX HARDWALL REBOUNDER

Congratulations! You have just purchased the best lacrosse rebounder on the market!



Please take the time to inspect your rebounder for any damage that may have occurred during shipping and that all parts and components are received. Save the boxes and crates that the product was delivered in case you need to return any parts to Laxworx. Inspect the box it was shipped in for damage and inspect the product within for damage. If you see any damage, please take pictures of both the shipping box and the product and submit to info@laxworx.com with your name and order number and a description of the damage in order to make a claim. In the event of a damage claim we will email you a pre-paid shipping label and directions to return the product. You will have a two week period from the day the rebounder gets delivered to you, to unpack, inspect for damage and submit a claim.



Use caution upon set up, breakdown, storage, transportation and use of this wall. The wall is heavy and can cause damage or injury if dropped or tipped over. Before use of this wall, user (accompanied by an adult if under 18 years old), should inspect all components to make sure all components are in proper working order and that the product is set up stable on firm solid ground. Users of this wall should wear all the appropriate safety equipment during use to protect themselves from a rebounded ball. This product should only be used in a well-lit environment. This wall rebounds the ball at a very high efficiency. Be careful, balls thrown at this wall with a high velocity will rebound with a high velocity. This product is intended for outdoor use. It is only recommended for indoor use in areas designed for sports play that have ample area. This wall is not intended for beginner players. It is intended for advanced players with elevated skills. Start off with very soft throws to the rebounder from about 8-12 feet away and be very careful as the rebound will come back very quickly. It is best to start off slow in order to get used to the speed and efficiency of the hard-wall rebounder. The arc on the playing surface helps widen the vertical sweet spot. The radius of the arc is designed to play about 12 feet away. If you play closer or further away than this, you will need to dial into sweet spots to hit for a proper return angle. The length of the front legs are adjustable so that you can adjust the angle of the playing surface.



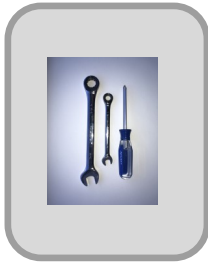
HIGH WIND ALERT- During high wind conditions, this rebounder should not be used and should be stored or put in the down position as to not get blown over.

The rebounder is extremely heavy and could cause damage/injury to itself, people or to other objects nearby if heavy winds were to blow it over. Store it or secure it, in expected high wind conditions, as you would any other outdoor equipment such as patio furniture, grills, etc...



LAXWORX HARDWALL REBOUNDER

ASSEMBLY INSTRUCTIONS



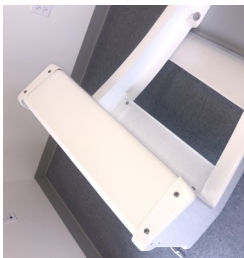
STEP 1- Place the main wall body face down on the ground, ideally on soft turf or grass, otherwise use a soft blanket or mat on hard surfaces to protect the surface of the rebounder from scratches. You will need two wrenches, sizes 7/16" and 3/4" as well as a phillips head screwdriver for assembly.



STEP 2- Insert 1/2" x 7/8" hex bolts (qty4), through fender washers (qty4). Place a drop of the 3M thread lock liquid on the threads of the hex bolts. Align the left leg so the holes match up with the threaded inserts on the backside of the main wall body. Insert the bolt/washers assembly through the hole in the leg and into the threaded insert in the main body. Use a 3/4" wrench to tighten very securely. Repeat for right leg.



STEP 3- Position the front cross brace inside the legs and align the holes. Use the 3/4" phillips pan head machine screws (qty 4) and the nylon lock nuts (qty 4) to bolt the brace to the legs. Use a phillips head screw driver and a 7/16 wrench to tighten very securely. Locate and bolt on the front leveling feet (qty 2) as shown. The length of these leveling feet are adjustable to alter the angle of the wall assembly. This will be discussed later in this publication. For now set both to a similar length as shown.

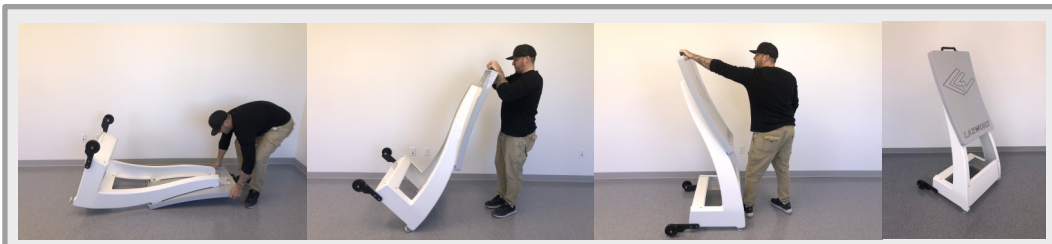


STEP 4- Position the front rear brace inside the legs and align the holes. Use the 3/4" phillips pan head machine screws (qty 6) and the nylon lock nuts (qty 6) to bolt the rear brace to the legs. Use a phillips head screw driver and a 7/16" wrench to tighten very securely.



STEP 5- Position the left and right wheel assemblies to the legs and align the holes as shown. Use the 1-1/2" phillips pan head machine screws (qty 4) and the nylon lock nuts (qty 4) to bolt the wheel assemblies to the legs. Use a phillips head screw driver and a 7/16" wrench to tighten very securely.

ASSEMBLY COMPLETE! - Rotate the assembled rebounder to the upright position as shown.





LAXWORX HARDWALL REBOUNDER



MOVING THE HARDWALL REBOUNDER– (Under Adult Supervision) Stand behind the rebounder and grip the handle on top of the wall body with two hands. Rebounder is heavy, so slowly and with a firm grip, tip the rebounder back towards the wheels and rotate into a position as shown. In this position you can pull the rebounder on the wheels. Avoid soft, uneven ground. Once you have the rebounder where you want it, slowly rotate it back to its upright standing position.



ADJUSTING THE PLAYING ANGLE– (Under Adult Supervision) Stand behind the rebounder and grip the handle on top of the wall body with two hands. Rebounder is heavy, so slowly and with a firm grip, tip the rebounder back towards the wheels and rotate into a position as shown. In this position you can adjust the front leveling feet. Adjust both feet to keep length the same. The longer the feet, the more angle the playing surface will have and the ball will be rebounded higher, and vice-versa. After length adjustments have been made to the leveling feet, rotate the rebounder back to its upright standing position.



LAYING REBOUNDER DOWN ON PLAYING SURFACE– (Under Adult Supervision) Stand in front of the rebounder and grip the handle on top of the wall body with two hands. Rebounder is heavy, so slowly and with a firm grip, tip the rebounder forward towards you and rotate into a position as shown. This is an ideal position in expected high wind conditions. When desired, rotate the rebounder back to its upright standing position.



Caring for your Hardwall Rebounder– Your rebounder is made from the same materials you would find on a high quality boat or yacht. The materials were specifically chosen to resist weathering in harsh environments. You can leave it outside and wash it and wax it a few times a year, as you would a car or boat, and it will remain in great condition for many years to come. Of course like everything else, covering or storing the rebounder will add to its longevity.

LAXWORX Hardwall Rebounder Contents Packing List

	Rebounder Main Body (Qty-1)		Left Wheel Assembly (Qty-1)
			Right Wheel Assembly (Qty-1)
			1/2" x 7/8" Hex Bolt (Qty-4)
			Fender Washer (Qty-4)
			1-1/2" Phillips Pan Head Machine Screw (Qty-4)
			3/4" Phillips Pan Head Machine Screw (Qty-10)
			Nylon Lock Nut (Qty-14)
			Front Leveling Feet (Qty-2)
			3M Thread Lock Liquid (Qty-1)
	Left Leg (Qty-1) , Right Leg (Qty-1)		
	Front Cross Brace (Qty-1)		
	Rear Cross Brace (Qty-1)		

Warranty

All parts and components of the Laxworx hardwall rebounder will be covered under warranty for one year. Under normal use and normal conditions, any part or component that fails structurally or compromises the intended use of the product will be replaced by Laxworx. Any components that are damaged during shipping will be replaced. If any damage has occurred during the shipping process, contact Laxworx immediately to rectify. You will have two weeks from the date of delivery to inspect the product and to make a claim on damage suffered during shipping.

Return Policy

All parts and components of the hardwall rebounder are structurally guaranteed under normal use. All Sales through Laxworx are final. Any parts or components damaged upon shipping or due to lack of workmanship will be replaced by Laxworx. If you need to replace any parts or components that are damaged, or that have failed under normal use, please email info@laxworx.com to arrange for an exchange.

Waiver Agreement (Electronically signed at e-commerce checkout)

Lacrosse by nature is an inherently dangerous sport, adult supervision is recommended for setting up, breaking down, transporting, storing, inspecting and for use of this product. Purchasers of this product are responsible to make any subsequent users of this product aware of the hazards, recommendation and liability limitations associated with the handling and use of this product. Please follow directions found on the product for the set-up and breakdown of this product.

Use caution upon set up, breakdown, storage and transportation of this product. This product is heavy and can cause damage and/or injury if mishandled, dropped or tipped over. Caution should be taken when handling the product. Before use of this product, purchaser should inspect all components to make sure all components are in proper working order and that the product is set up stable on firm solid ground and avoid use in wet or slippery conditions. All components of this product including joints, hardware, handles and connections should be inspected and in proper working order prior to use of the product. Do not leave product unattended in the set-up position. When this product is not in use, it should be stored in a down position in a dry safe place. This product is intended for outdoor use and should only be used in a well-lit environment. This product is only recommended for indoor use in areas designed for sports play that have ample area and lighting. This product is not intended for beginner players, it is intended for advanced players with elevated skills. All new users should throw lacrosse balls with reduced velocity and with caution to build up comfort level and familiarity with the product.

Users of this product should wear all the appropriate safety equipment during use to protect themselves from a rebounded ball, including protection for head, eyes, teeth, mouth, hands, groin and any or all body parts exposed to a rebounded ball. This product rebounds the ball at a very high efficiency. Lacrosse balls are dense and will contain large amounts of kinetic energy when thrown with great velocity. Use product with caution as balls thrown at this product with a high velocity will rebound with a high velocity. Intended for use as a lacrosse ball rebounder and no other uses.

LIABILITY RELEASE AND INDEMNIFICATION

Having signed this document electronically at check out, this will affect your rights to raise a claim against the manufacturer and may be used as evidence in an adjudicative proceeding in the event that you do so. In addition, by having signed this document, you assumed all liability for any injury or damage that you may cause to yourself or others by use of the LAXWORX Hard Wall Rebounder from your own personal use or extending the use of this product to other users.

You have conceded that you are aware that the use of a Hard Wall Lacrosse Rebounder involves many risks, dangers and hazards when transporting, setting up, breaking down and using product as a practice or training apparatus. The risks, dangers and hazards, including but not limited to: tipping hazards; hazard due to heavy weight; moving parts during setup and breakdown that may cause a pinch point hazard to body part; loss of balance; difficulty or inability to control one's speed and direction; variation or steepness in terrain; rapid or uncontrolled acceleration on hills and inclines; mechanical failure of equipment; variation or changes in the playing surface including rocks, gravel; changing weather conditions; exposure to temperature extremes or inclement weather; travel or transport to and from the sites used for playing; failing to play safely or within the limitations of one's own abilities, negligence of other participants; and negligence on the part of the releasees, including the failure on the part of the risks releasees to safeguard or protect me from the risks, dangers and hazards of.